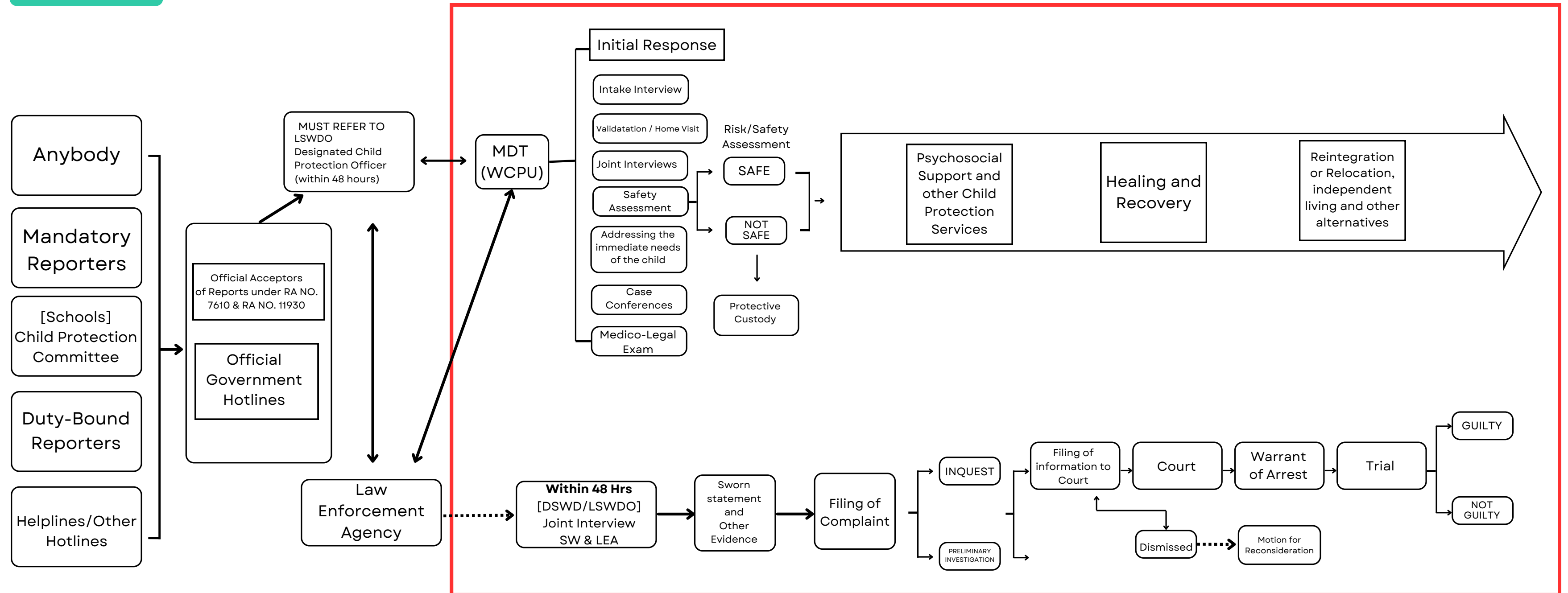


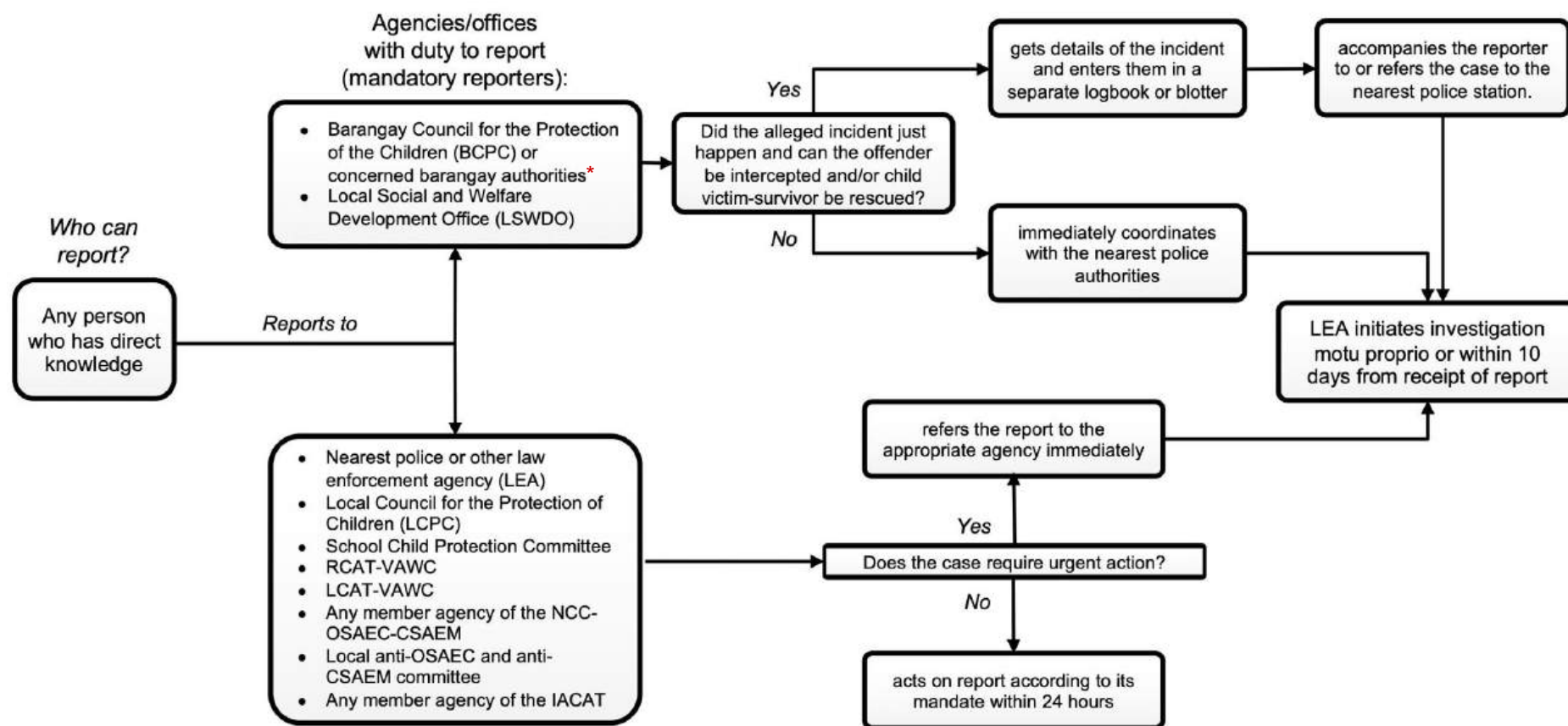
FLOWCHART CANE+D



Note: The MDT services are delivered regardless of whether a complaint is filed or whether it reaches court or not.

Flowchart for OSAEC

Annex “B” Reporting Process Flowchart Rule II, Article 1, Secs. 5-8



*Discussion during the 09 June 2025 CSPC Meeting, DILG recommended to include: Reporting may be done at the barangay VAW Desks

Flowchart for OSAEC

Annex “C” Filing of Cases Flowchart Rule IV, Article 1, Secs. 49-54

