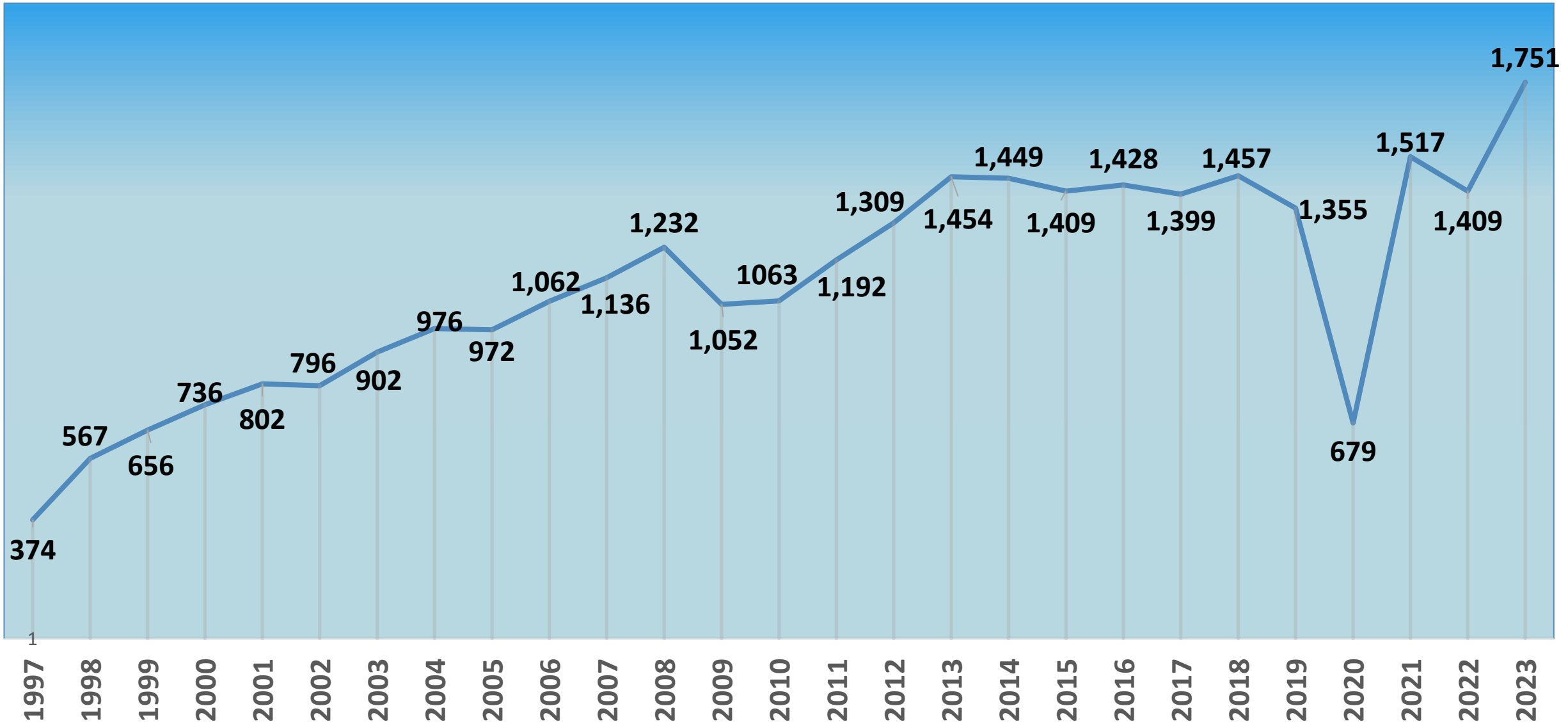


WCPU STATISTICS 2022 Child Protection Network Foundation, Inc.

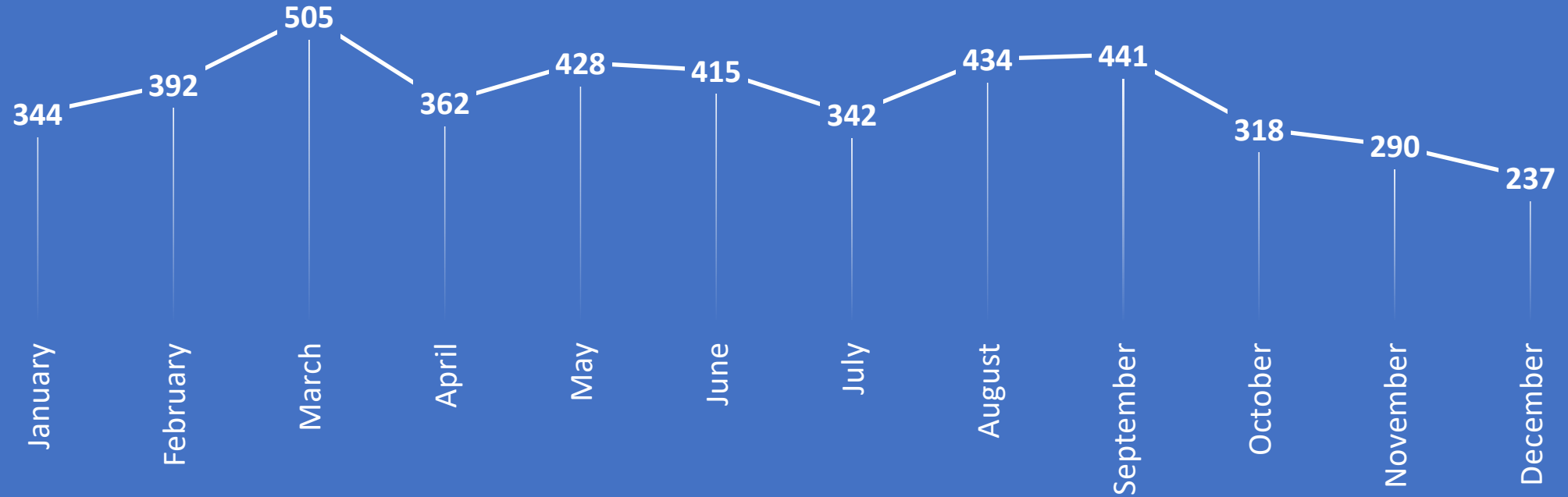
Source: Women and Children Protection Management Information System: Stand-Alone and Web-based Database

NUMBER OF NEW PATIENTS OF PGH-CPU PER YEAR, 1997-2003



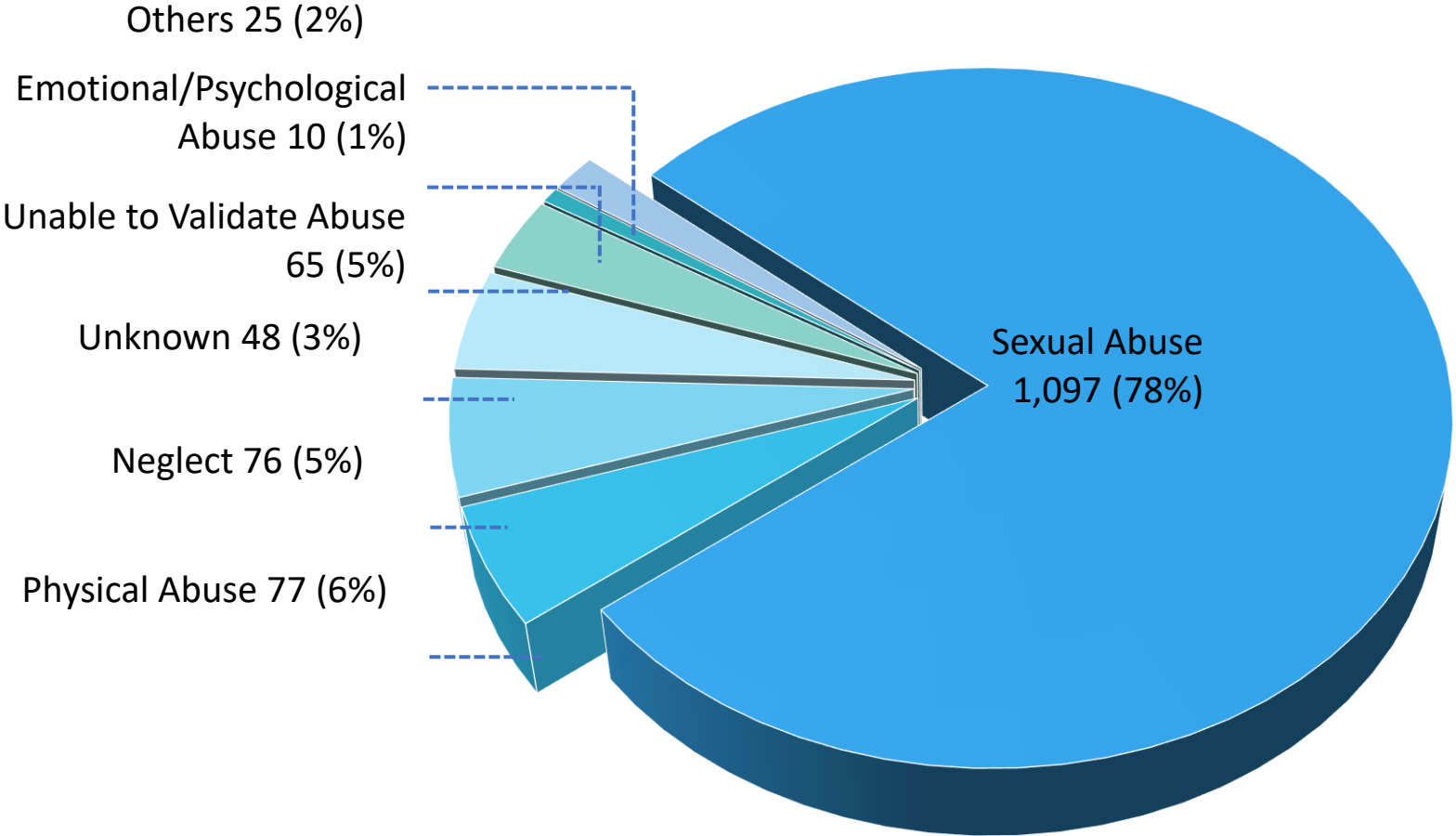
Source: Women and Children Protection Management Information System (Stand-alone and Web-based Database) by Child Protection Network Foundation, Inc.

NUMBER OF PATIENT FOLLOW-UPS PER MONTH, PGH-CPU, 2022



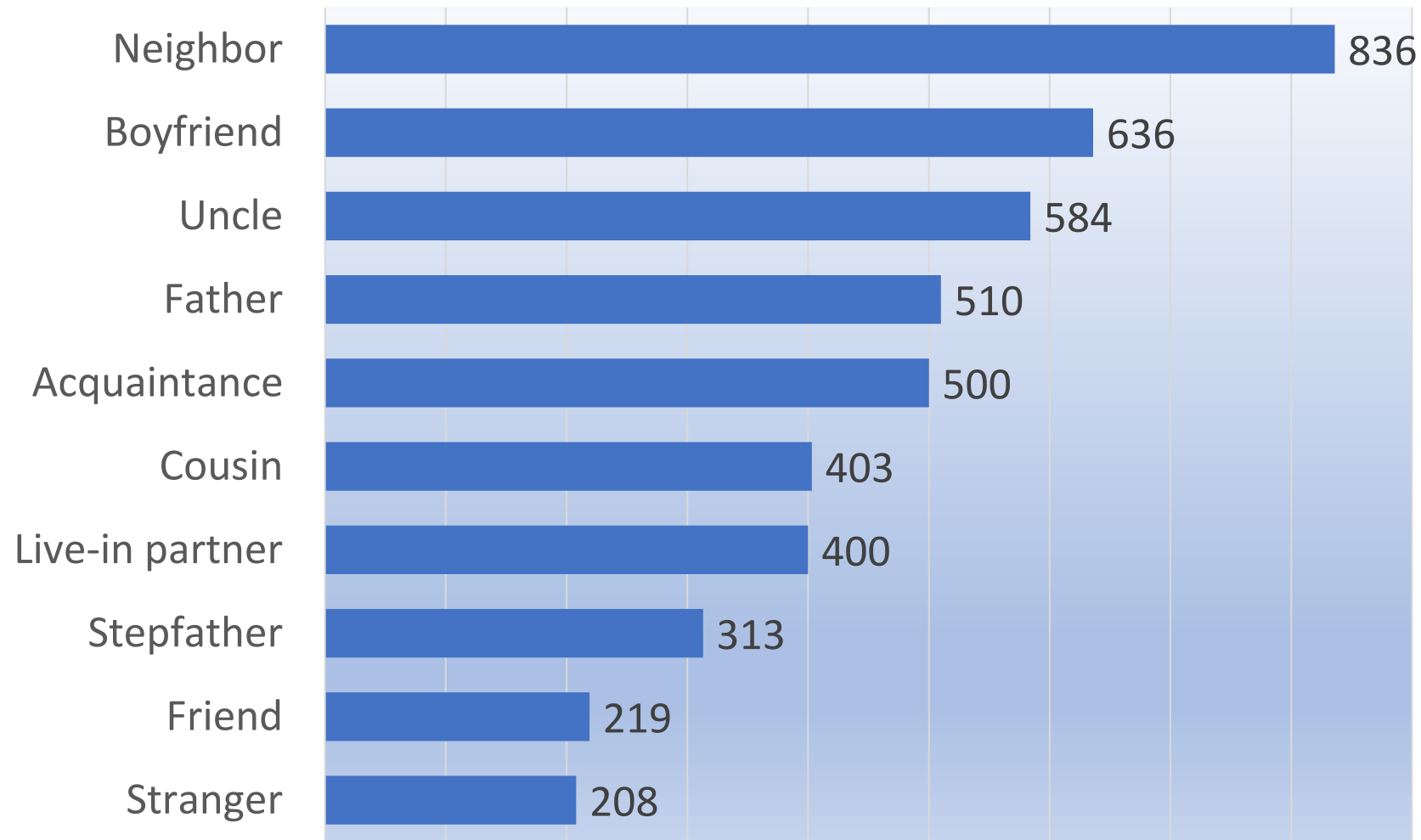
Total number of follow-ups: 4,508

Distribution of PGH-CPU patients by Type of Abuse, PGH-CPU, 2022



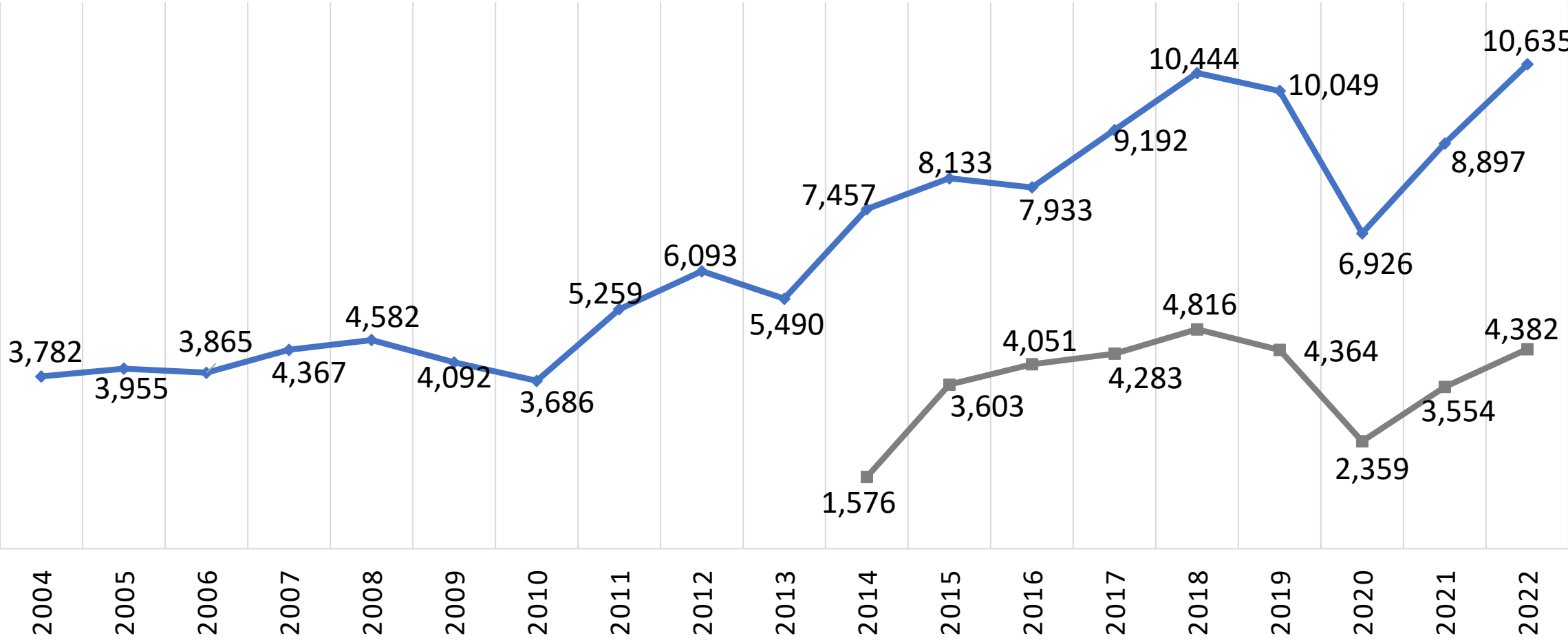
Source: Women and Children Protection Management Information System (Stand-alone and Web-based Database) by Child Protection Network Foundation, Inc.

Perpetrators of Child Sexual Abuse by Relationship to Victim, PGH-CPU, 2022



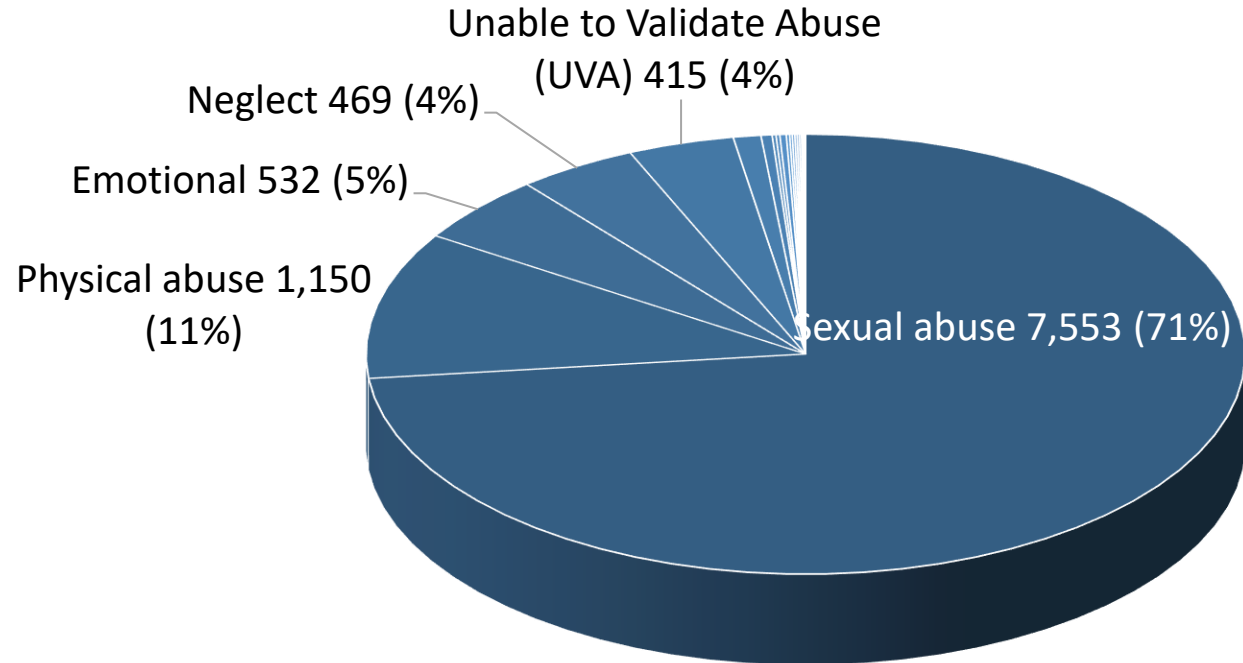
Number of New Patients of WCPUs Nationwide per year, 2004-2022

Children Women



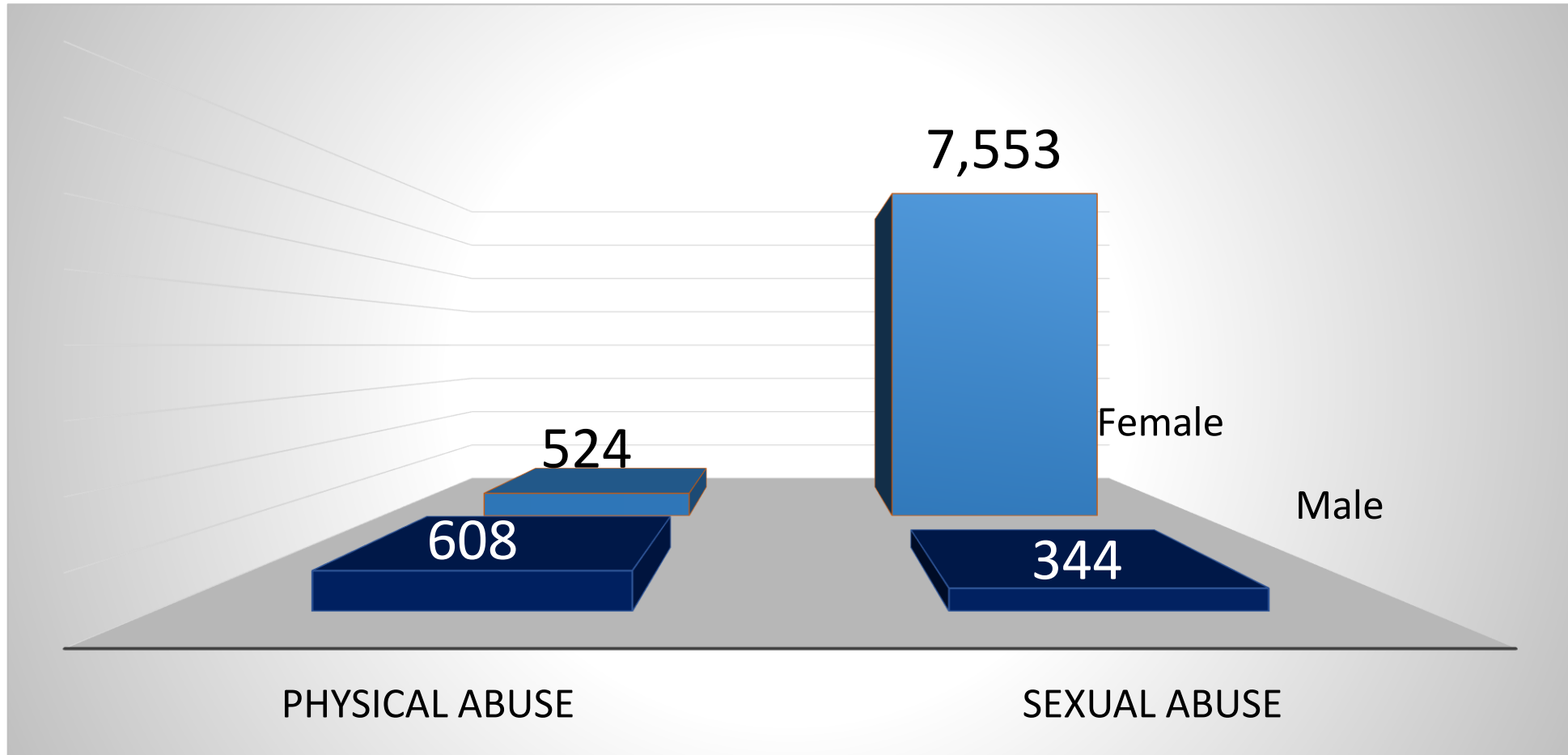
Source: Women and Children Protection Management Information System (Stand-alone and Web-based Database) by Child Protection Network Foundation, Inc.

Distribution of 0-17-year-old Patients by Type of Abuse, WCPUs Nationwide, 2022

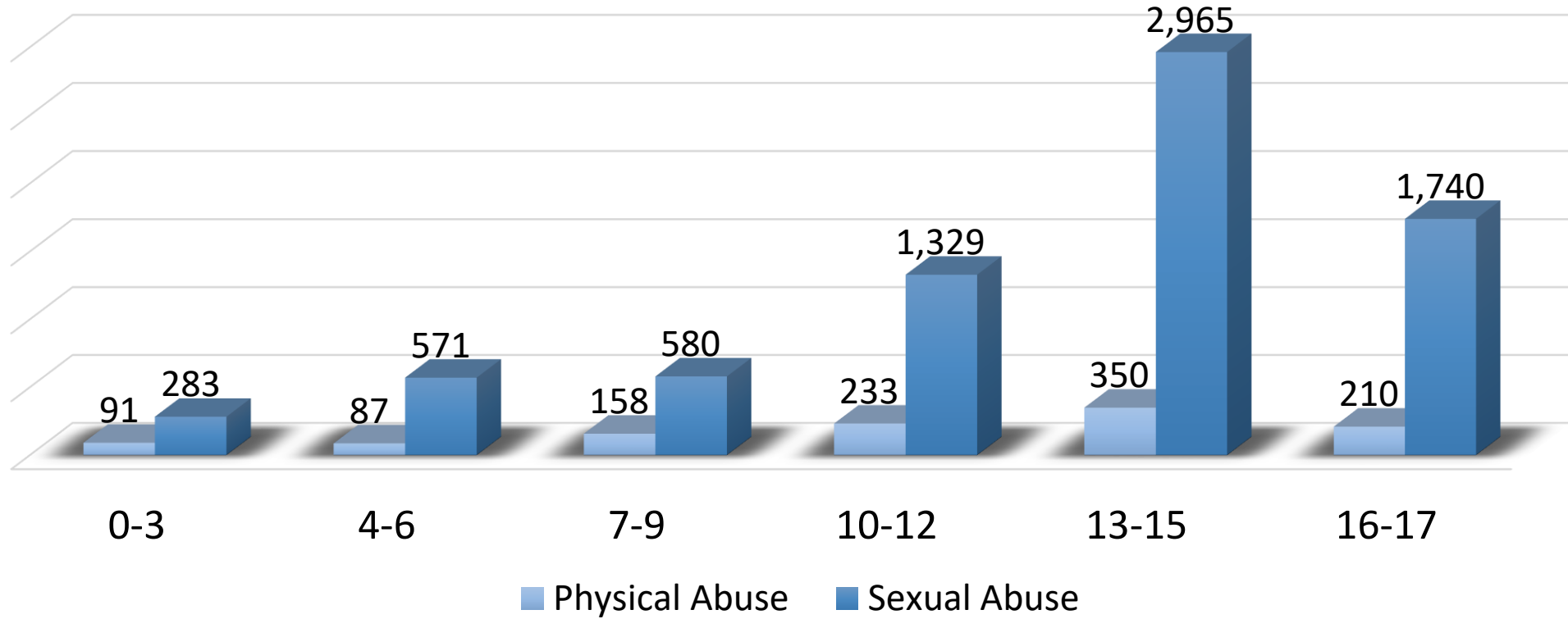


- Sexual abuse 7,553 (71%)
- Emotional 532 (5%)
- Unable to Validate Abuse (UVA) 415 (4%)
- Sibling of a Child Abuse case 43 (0.40%)
- Child Trafficking 15 (0.14%)
- Psychotic Disorders 13 (0.12%)
- Trauma and Stressors related Disorders 10 (0.09%)
- Mood Disorders 9 (0.08%)
- Online Child Sexual Abuse 5 (0.04%)
- Physical abuse 1,150 (11%)
- Neglect 469 (4%)
- Unknown 108 (1%)
- Online Child Sexual Exploitation 15 (0.14%)
- Minor Perpetrator 25 (0.23%)
- Sextortion 10 (0.09%)
- Cyber Bullying 9 (0.08%)
- Child Marriage 8 (0.07%)
- Traditional Bullying 5 (0.03%)

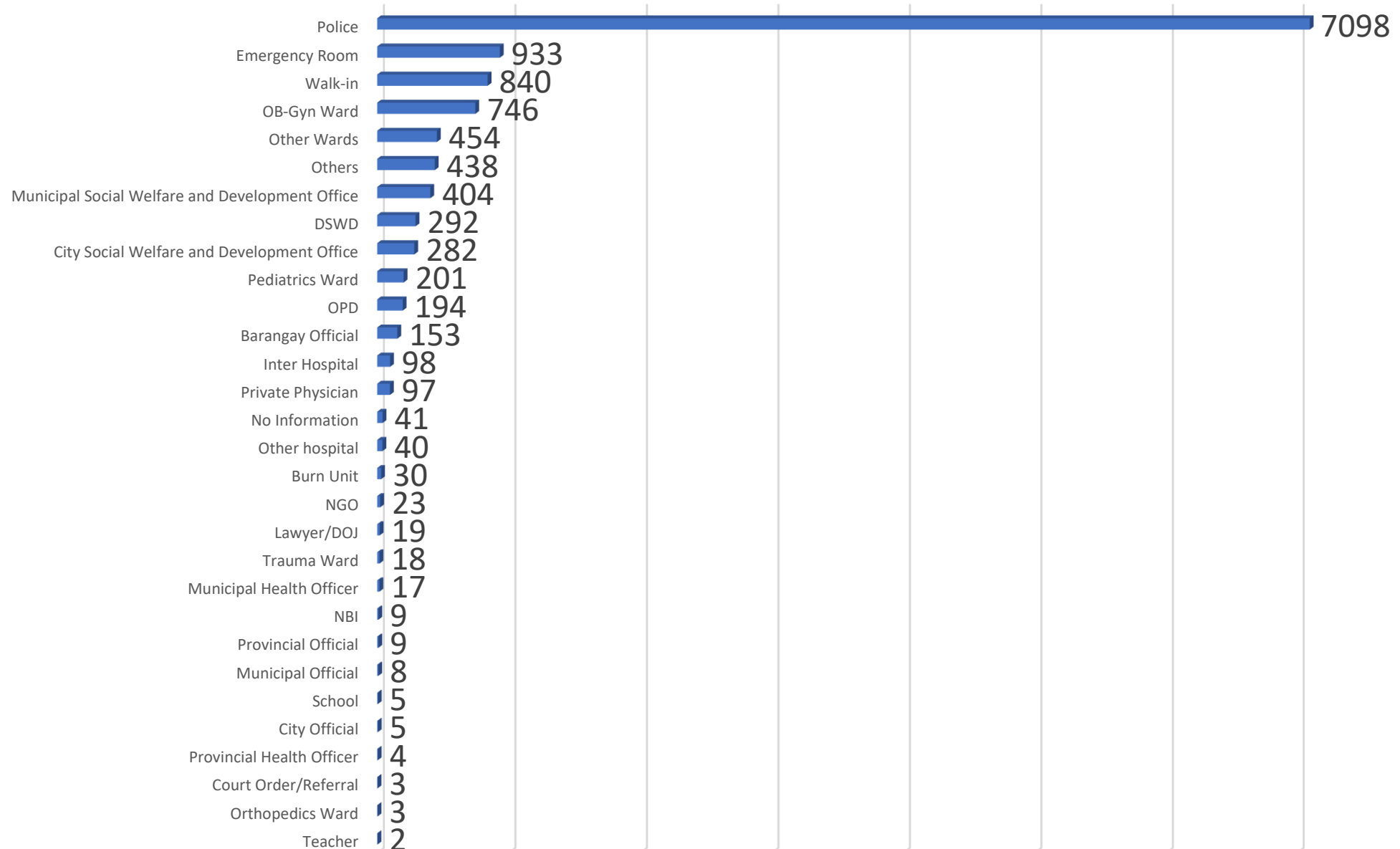
Distribution of Patients by Sex by Type of Abuse WCPUs Nationwide, 2022



Distribution of Patients by Age Group and by Type of Abuse WCPUs Nationwide, 2022

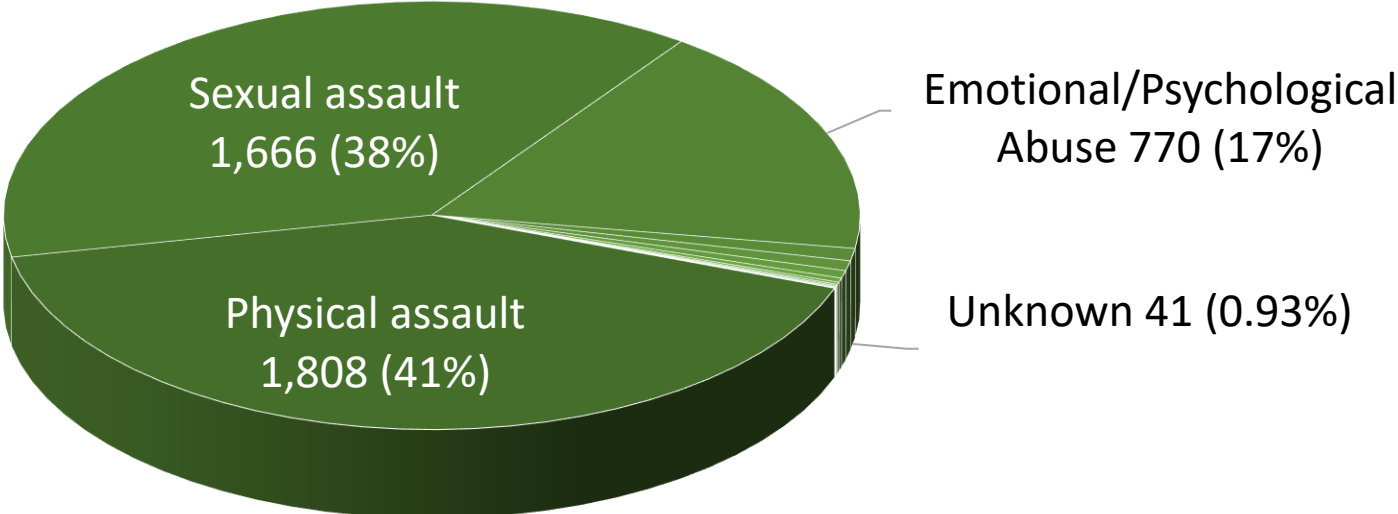


VAC Primary and Secondary Sources of Referral WCPUs Nationwide, 2022



Source: Women and Children Protection Management Information System (Stand-alone and Web-based Database) by Child Protection Network Foundation, Inc.

Distribution of VAW Cases by Type of Abuse, WCPUs Nationwide, 2022



- Physical assault 1,808 (41%)
- Emotional/Psychological Abuse 770 (17%)
- Unable to Validate Abuse (UVA) 33 (0.75%)
- Neglect 14 (0.15%)
- Trauma and Stressors related Disorders 5 (0.11%)
- Mood Disorders 3 (0.06%)
- Cyber Bullying 1 (0.02%)
- Stalking 0 (0%)
- Sexual assault 1,666 (38%)
- Unknown 41 (0.93%)
- Human Trafficking 25 (0.57%)
- Child Trafficking 7 (0.15%)
- Psychotic Disorders 4 (0.09%)
- Sextortion 1 (0.02%)
- Traditional Bullying 0 (0%)

Source: Women and Children Protection Management Information System (Stand-alone and Web-based Database) by Child Protection Network Foundation, Inc.

Distribution of VAW Cases by Age Group and by Type of Abuse WCPUs Nationwide, 2022

